

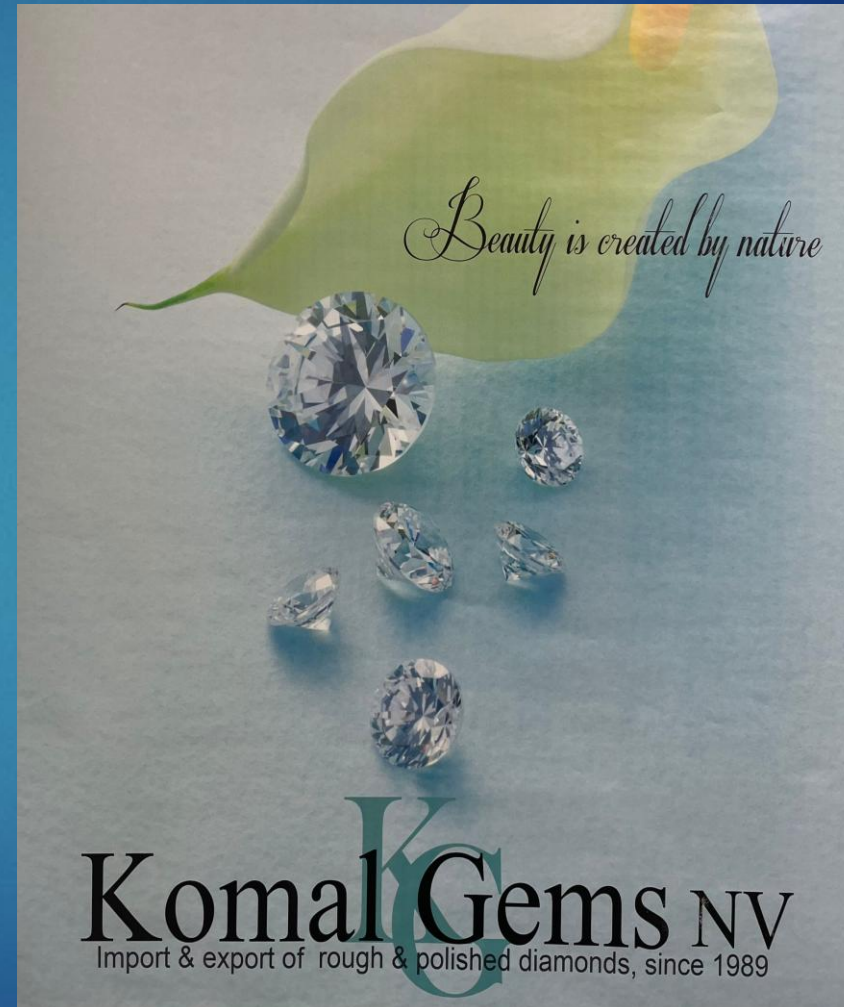
Komal Gems Business Marketing

Contents

- ❑ Identity and Principles;
- ❑ Production Scope: 4C's;
- ❑ Ethical Responsibility and Consciousness: 5th C;
- ❑ Our Impact;
- ❑ Our Look into the Future;
- ❑ Industry Challenges;
- ❑ How to reach us;

Who are we?

-Komal Gems NV is a **rough** and **polished natural diamond trader** for the European and the global market. The company was founded in 1989 in Antwerpen, Belgium by Mr Girdharbhai Gajera, and has proven itself as a leader in the industry with its fine quality, team of experts and long-term vision of trust and partnership. The company's roots and expertise in diamonds go back to the world's diamond manufacturing centre in Surat, India.



Our principles

- ❑ Trust;
- ❑ Relationship;
- ❑ Clarity;
- ❑ Excellence;
- ❑ Consistency;
- ❑ Innovation;
- ❑ Flexibility.



Production Scope

- ❑ Komal Gems specializes in both **rough** and **polished diamonds** of **all sizes and colours**.
- ❑ We supply polished diamonds of fine cut in **all colours** and **clarity** with sizes starting from **-6.5** up to **40.00 cts**. We specialize in **round brilliant** and **fancy shapes** such as: marquise, pear, oval, emerald, baguette, princess, cushion and heart shape with desired ratios. Additionally, all larger pieces come with GIA/HRD/IGI Certification.
- ❑ Rough production from us can be mapped and cut into desired polished shapes upon request through our direct partnerships.
- ❑ Our team of experts provide a wide selection of natural diamonds, catering to the specific needs of the market in B2B (business to business) trading.

Rough diamonds



Polished diamonds



Production Scope: the 4 C's

The diamond standard for identification of the stone's quality is based on the following characteristics:

- ❑ Cut: It shows how well the stone has been cut and polished regarding its symmetry and proportions. Komal Gems supplies diamonds from good to ideal make, specializing in **fine make** in **round** and **fancy shapes**;
- ❑ Colour: Overviews the stone's whiteness or colour hues. Komal Gems specializes in **whites, yellows and browns (TTLC, TTLB)**, as well as other colours with all colours available in rough; Our categories start at **DEF** in the **colourless range**, continue through the **near-colourless GHI range** and go to fancies as well.
- ❑ Clarity: Characterizes the stone's purity. Our supply ranges from **IF (Internally Flawless)** to **PQ (Piqué)** diamond clarity;
- ❑ Carat weight: It shows the diamond weight in carats (1ct=0.2gm) and impacts the size in addition to its cut and proportions. Komal Gems provides a vast carat range from size **-6.5 to 40.00 carats** in loose goods in all shapes and **GIA certified goods**.

Our 5th C

With the advancement of the diamond industry, a new factor becomes more crucial daily, standing right next to the standard grading criteria: the **Consciousness** factor, referred to as the **5th C**.

- ❑ To ensure conscious trading and responsibility in sourcing from conflict-free areas only, Komal Gems partners with reputable organizations and has efficient policies and procedures in place to ensure responsible diamond sourcing.
- ❑ With its 35 years of experience in the market, Komal Gems is a proud member of the Antwerpsche Diamantkring , part of the **World Federation of Diamond Bourses**, and a member of the **Responsible Jewellery Council (RJC)**.

Our Impact

- With our scope comes our responsibility towards fair and **traceable trade** and towards the **human factor** in the pipeline. Komal Gems has established relations only with suppliers of **ethical work practices** from approved **conflict-free locations** such as **Canada, Botswana, South Africa**, etc.
- All rough production comes with a **KP (Kimberly Process) Certificate** and all polished production is in line with the **WDC SoW (World Diamond Council System of Warranties) guidelines**.
- Komal Gems' team is one of experts of various backgrounds. The company is conscious of **inclusivity** by building a better future for all members of staff, offering **opportunity for growth** for men and women equally.

Our Look into the Future

As every company that lasts and thrives, we at Komal Gems adhere to our strong ground principles and act in the market with vision towards a better future. Our short and long-term plans for the future include:

- ❑ Continuously turning **traceability** into a standard practice, broadening our **reputable partnerships**: Komal Gems is a member of the Responsible Jewellery Council;
- ❑ **Adaptability** and specialization to provide optimal quality diamonds for the various market demands; Being present with trends and conscious towards **supply and demand**;
- ❑ **Accessibility**: Approaching jewellers and trade members, breaking stigmas regarding the unapproachability of the diamond market, making **luxury accessible**;
- ❑ Adopting newest **innovation** in **natural diamond screening**;
- ❑ Providing updated, continuous **training** and support for our staff members and broadening our care for the community;

Industry Challenges

- ❑ Ever since the Covid-19 Pandemic, the world has not been the same. That left its mark on the diamond industry as well. With the continuous production of lab-grown diamonds and other simulants, it is important for us to analyze the industry challenges and outline our plan and position for tackling them.
- ❑ Maintaining value – controlled manufacturing with profound supply and demand analysis;
- ❑ Advanced screening and protection;
- ❑ Positioning – our position as a mediator;
- ❑ Strengthening our partnerships: our contribution to a transparent trade;
- ❑ Spreading accessibility, awareness, education: Myths VS Reality;

Where to find us?

Our office is based in the Antwerpen Diamond District, Belgium.

Appointments and office visits are available.

- ❑ Address: Diamantkring Building (A.D.C), Hovenierstraat 2, Office 619-Box 347, 2018, Antwerpen, Belgium;
- ❑ Telephone: +3232264281;
- ❑ Email: info@komalgems.eu.